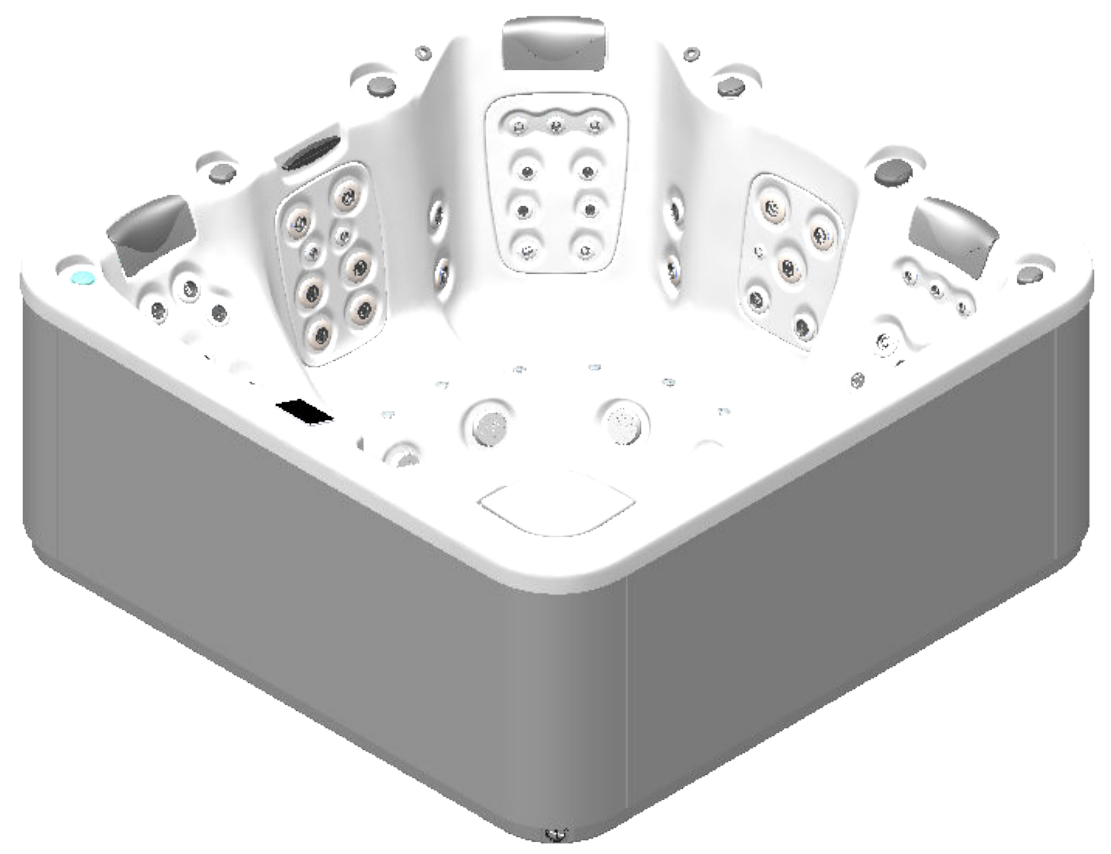
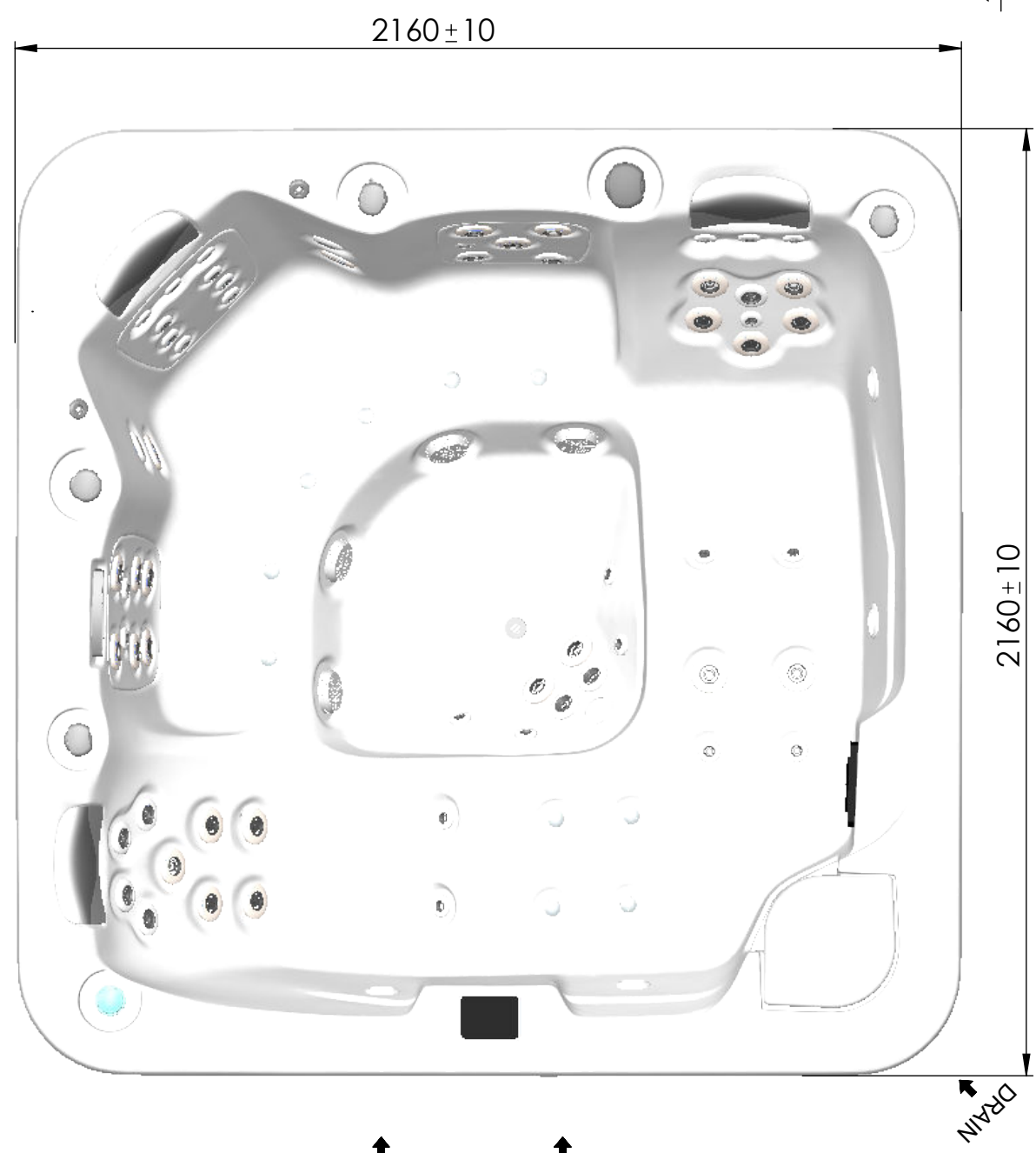
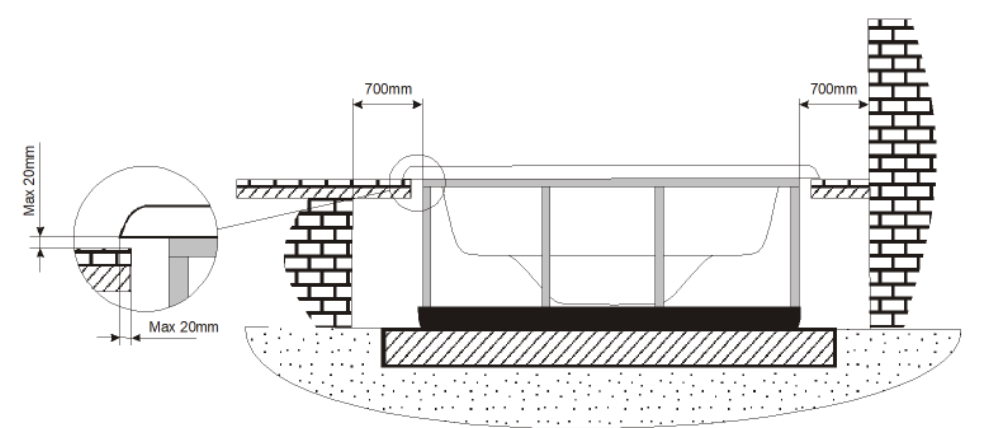


| General specifications |         |
|------------------------|---------|
| Spa weight (dry)       | 330 kg  |
| Spa weight (filled)    | 1230 kg |



**WARNING:**  
It's essential to keep a minimum clearance access of **700mm** all around.



According to our policy of continuous improvement, dimensions, features or components of this product can be partially or completely changed without prior notice. It's Customer responsibility to verify that this is the last version of the drawing

| 01                                            | 19/11/2019         | IRICA  | Drain position modified |
|-----------------------------------------------|--------------------|--------|-------------------------|
| Change No.                                    | Date               | Name   | Modification            |
| Remarks                                       |                    |        | COMMERCIAL              |
| Dimensions in mm. General Tolerances +/- 10mm |                    |        |                         |
| Drawn                                         | 19/11/2019         | I.RICA |                         |
| Checked                                       | 19/11/2019         | V.Saiz |                         |
| Scale 1:15                                    | General Tolerance  |        | 70515                   |
| Sheet 1/2                                     | DIN 7168 ISO 2768g |        |                         |
|                                               |                    |        | Rev. 01                 |
|                                               |                    |        | First Angle Projection  |